

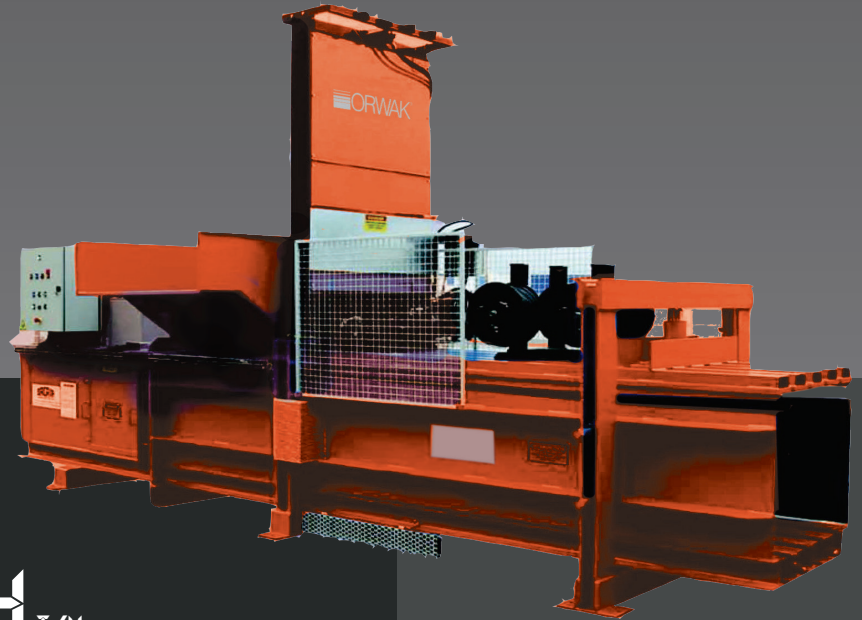
# ORWAK

## HORIZONTAL

# HORIZONTAL 2130 AT & 2140 AT

### CENTRALIZED WASTE HANDLING

Our fully automated horizontal 30 & 40 ton balers meet the challenges by centralized waste handling in many businesses and organizations where huge volumes of recyclable paper-based and plastic wrapping are produced. We offer well-proven technology for special demands! The automatic tying and continuous baling allows multi-shift operation.



## Automatic solution



CAPACITY  
CARDBOARD

## Optimal features

### WELL PROVEN TECHNOLOGY

### LARGE FEEDING CHUTE

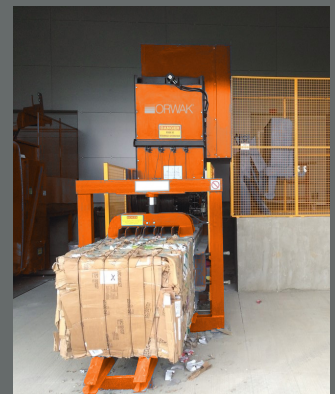
### DIFFERENT DRIVES

depending on requirement

### ADJUSTABLE BALE LENGTH

### INTEGRATED HEATING & COOLING

**CYCLE** for the hydraulic oil for troublefree operation also in case of extreme temperatures



## Why Orwak Horizontal?

- + Effective large-scale waste handling
- + Easier and less frequent waste transports
- + Safe and comfortable working environment
- + Excellent control over the throughput
- + Increased income when delivering high-quality bales directly to the recycling industry.

[www.orwak.com](http://www.orwak.com)

 ORWAK®

Smart fully automated solution

### OPTIMIZED FOR:

#### PAPER

+ Paper sacks  
+ Cardboard

#### PLASTIC

+ Shrink film  
+ PET/ PEHD

#### METAL

+ Food cans  
+ Paint cans

#### WOOD

+ Crates

### CONTINUOUS FEEDING AND OUTPUT

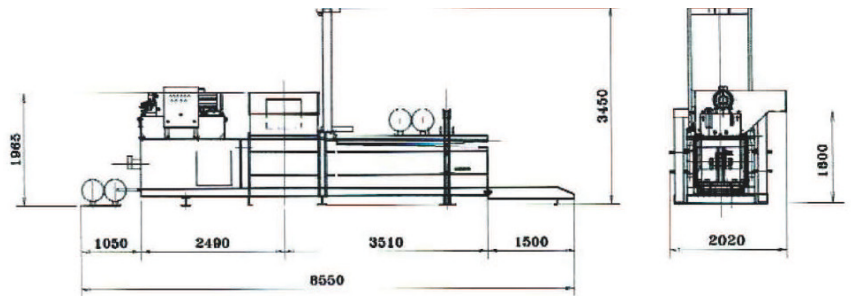
A completely automated waste management solution designed for continuous feed, automatic horizontal or vertical strapping system with adjustable wire links, which enables you to yield optimal output.

### A VARIETY OF INFEED OPTIONS

To fit the conditions in your environment, our horizontal balers offer a wide choice of infeed systems: manual, by bin, air-transport and conveyor belt.

Our balers can also easily be equipped with shredders, bottle presses, rufflers, strippers and different types of hoppers.

### 2130 AT & 2140 AT



## DIMENSIONS & SPECIFICATIONS

### TECHNICAL DATA

MODEL	2130 AT	2140 AT
<b>Machine dimensions (LxWxH mm without bale exit)</b>	7050x1780x3450	7050x1780x3450
<b>Feed opening (mm)</b>	1200 x 900	1200 x 900
<b>Infeed capacity (m<sup>3</sup>)</b>	0.85	0.85
<b>Press force (ton)</b>	30	40
<b>Motor (kW / Hp)</b>	7.5/10	15/20
<b>Surface pressure (kg/cm<sup>2</sup>)</b>	4.1	5.6
<b>Cycles per minute</b>	1.5	3
<b>Channel section (mm)</b>	900 x 800	900 x 800
<b>Oil tank capacity (L)</b>	250	400
<b>Total machine weight (kg)</b>	6000	6500
<b>Theoretical output (m<sup>3</sup>/h)</b>	75	150
<b>Loading output (m<sup>3</sup>/h)</b>	50	90
<b>Automatic binding</b>	4 wires Ø 3.2	4 wires Ø 3.2
<b>Bale size (mm)</b>	900x800x	900x800x
<b>adjustable length</b>	800-1400	1000-2000
<b>Bale weight cardboard (kg)</b>	300 kg	300-350 kg
<i>depends on bale length</i>		



OPTION: CONVEYOR BELT



OPTION: BIN LIFT

We reserve the right to make changes to specifications without prior notice. Bale weights are dependent upon material type.