

ORWAK

HORIZONTAL 2160 AT

HORIZONTAL

CENTRALIZED WASTE HANDLING

Our fully automated horizontal 60 ton baler meets the challenges by centralized waste handling in many businesses and organizations where huge volumes of recyclable paper-based and plastic wrapping are produced. We offer well-proven technology for special demands! The automatic tying and continuous baling allows multi-shift operation.



Automatic solution



6-10 T/H

CAPACITY
CARDBOARD

Optimal features

WELL PROVEN TECHNOLOGY

LARGE FEEDING CHUTE

DIFFERENT DRIVES
depending on requirement

ADJUSTABLE BALE LENGTH

INTEGRATED HEATING & COOLING CYCLE for the hydraulic oil for troublefree operation also in case of extreme temperatures



Why Orwak Horizontal?

- + Effective large-scale waste handling
- + Easier and less frequent waste transports
- + Safe and comfortable working environment
- + Excellent control over the throughput
- + Increased income when delivering high-quality bales directly to the recycling industry.

www.orwak.com

ORWAK®

Smart fully automated solution

OPTIMIZED FOR:

PAPER

- + Paper sacks
- + Cardboard

PLASTIC

- + Shrink film
- + PET/ PEHD

METAL

- + Food cans
- + Paint cans

WOOD

- + Crates

CONTINUOUS FEEDING AND OUTPUT

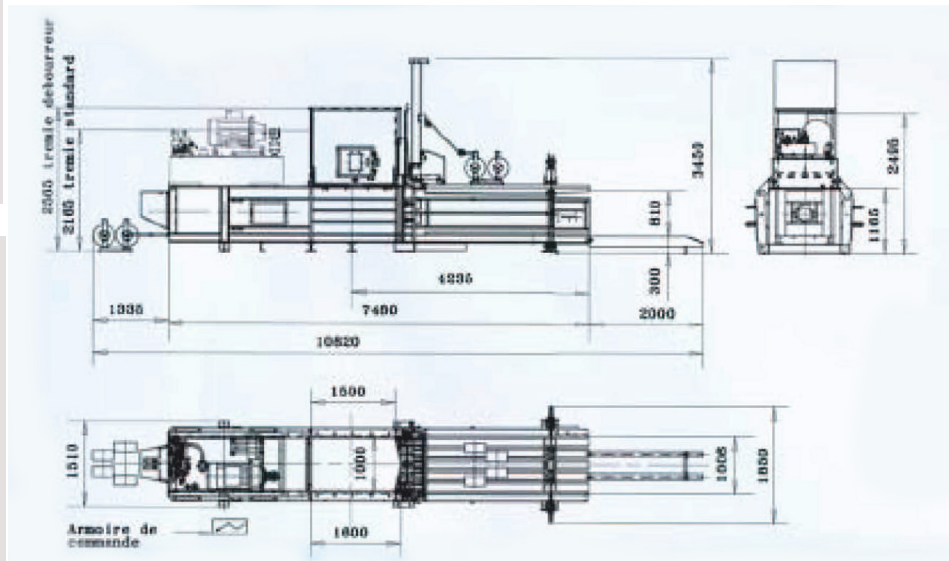
A completely automated waste management solution designed for continuous feed, automatic horizontal or vertical strapping system with adjustable wire links, which enables you to yield optimal output.

A VARIETY OF INFEED OPTIONS

To fit the conditions in your environment, our horizontal balers offer a wide choice of infeed systems: manual, by bin, air-transport and conveyor belt.

Our balers can also easily be equipped with shredders, bottle presses, rufflers, strippers and different types of hoppers.

2160 AT



DIMENSIONS & SPECIFICATIONS

TECHNICAL DATA

MODEL	2160 AT
Machine dimensions (LxWxH mm without bale exit)	8530x1850x3450
Feed opening (mm)	1550x1000
Infeed capacity (m ³)	1.24
Press force (ton)	60
Motor (kW / Hp)	37.5/50
Surface pressure (kg/cm ²)	7.7
Cycles per minute	3.5
Channel section (mm)	1000 x 800
Oil tank capacity (L)	1000
Total machine weight (kg)	13000
Production rate with load (m ³ /h)	160
Production accord. density (t/h)	6-10
Automatic binding	4 wires Ø 3.2
Bale size (mm) adjustable length	1000x800x adjustable length
Bale weight cardboard (kg) depends on bale length	400-600 kg



OPTION: CONVEYOR BELT



OPTION: BIN LIFT

We reserve the right to make changes to specifications without prior notice. Bale weights are dependent upon material type.