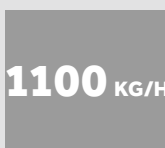


# BRICKMAN 1200K

BRICKMAN 1200K is developed to make the task of compacting extra large quantities of bulky waste, such as cardboard and pet bottles as simple as possible. The automated solution is time-saving and convenient and BRICKMAN 1200K has the capacity to process up to 1100 kg material per hour!



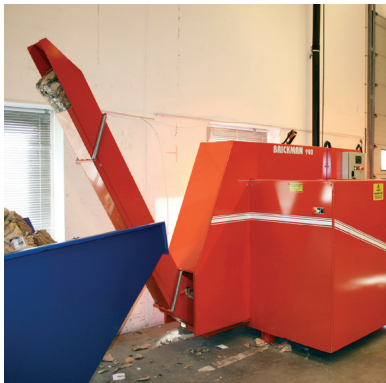
**AUTOMATIC  
SOLUTION**



**CAPACITY  
CARDBOARD**



## ORWAK BENEFITS



### **MORE PRODUCTIVE USE OF TIME**

Less time spent on waste handling, more time for your core activities!

### **MORE SPACE & ORDER**

Our balers rapidly minimize the space the waste takes up, keeping aisles free and tidy.

### **LESS COSTS, MORE VALUE**

More compaction = less waste volume to transport. Fewer transports required results in lower transportation costs and reduced CO<sub>2</sub> emissions. Sorting at source yields a higher quality of waste material for recycling.

## WHY BRICKMAN?

- Convenient fully automated compaction solution
- Impressive volume reduction of up to 20:1
- Placement opportunities indoors

 **ORWAK**  
PART OF **SULO** GROUP

# BRICKMAN 1200K

Turns large volume of material into compact briquettes for recycling

## CONVENIENT AND EFFICIENT

BRICKMAN offers time-saving and comfortable waste handling. The press can be fed while running, there is no lid or door to open when loading the material and the ready briquettes require no binding.

Furthermore, optional photocells can automate the start function. The material infeed and briquette outfeed are easy to integrate in system solutions.

## GREAT LOGISTICS

Thanks to BRICKMAN's compact dimensions and low sound emission, it can be placed indoors close to the waste disposal station.



## BRICKMAN 1200K IS OPTIMIZED FOR:

### CARDBOARD

- Corrugated cardboard

### CAPACITY

Up to 1100 kg/h

### PLASTIC

- PET bottles

### CAPACITY

Up to 900 kg/h

## DESIGNED FOR HEAVY DUTY

Thanks to the following features, the robust briquette press BRICKMAN 1200K is especially designed for compaction of large volumes of cardboard and empty PET bottles:

- Extension on the press cylinder
- Automatic greasing of the press plate
- Reinforced material in press chamber, press plate, cutting blades, guide piston and press loop

## OPTIONAL ACCESSORIES

BRICKMAN can be ordered with a number of accessories; different chute options, start systems, sound absorption plates as well as heating and cooling devices.

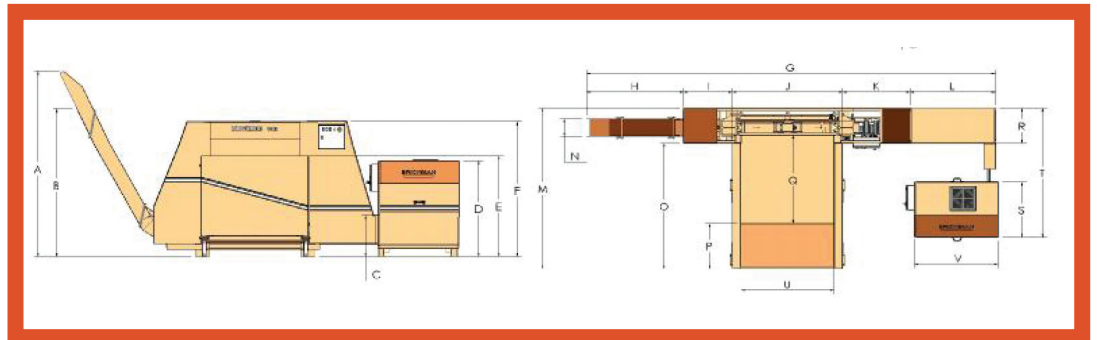
## DIMENSIONS & SPECIFICATIONS

### DIMENSIONS (mm)

| A    | B    | C   | D    | E    | F    | G    | H    | I   | J    | K   | L    | M    | N   | O    | P   | Q    | R   |
|------|------|-----|------|------|------|------|------|-----|------|-----|------|------|-----|------|-----|------|-----|
| 2470 | 2010 | 585 | 1350 | 1420 | 1870 | 5710 | 1355 | 685 | 1545 | 945 | 1180 | 2430 | 265 | 1900 | 690 | 1350 | 535 |

### DIMENSIONS (mm)

| S   | T    | U    | V    |
|-----|------|------|------|
| 840 | 1960 | 1300 | 1155 |



### TECHNICAL SPECIFICATIONS

| MACHINE WEIGHT | PRESS FORCE      | PRESSURE       | HOPPER           | BRIQUETTE SIZE     | DENSITY*                    | NOISE LEVEL | PROTECTION CLASS | OPERATING POWER   |
|----------------|------------------|----------------|------------------|--------------------|-----------------------------|-------------|------------------|---|
| 3800 kg        | 25 ton<br>250 kN | Up to 62 kg/cm | 2 m <sup>2</sup> | 200x200x100-300 mm | Up to 400 kg/m <sup>3</sup> | 68 db (A)   | IP 55            | 400 V, 3-phase, 50 Hz**<br>Fuse: 40 A (slow)<br>Engine: 11 kW, Voltage 24 V |

We reserve the right to make changes to specifications without prior notice. \* Density varies with type of material. \*\* Other voltages are available

## ORWAK AB

Svetsaregatan 4  
S-576 33 Sävsjö  
SWEDEN  
Tel: +46-(0)382-15700  
info@orwak.com

**ORWAK.COM**

**ORWAK**  
PART OF SULO GROUP